

Is it a paperweight, light dimmer, patio heater or a high performance computing centre?

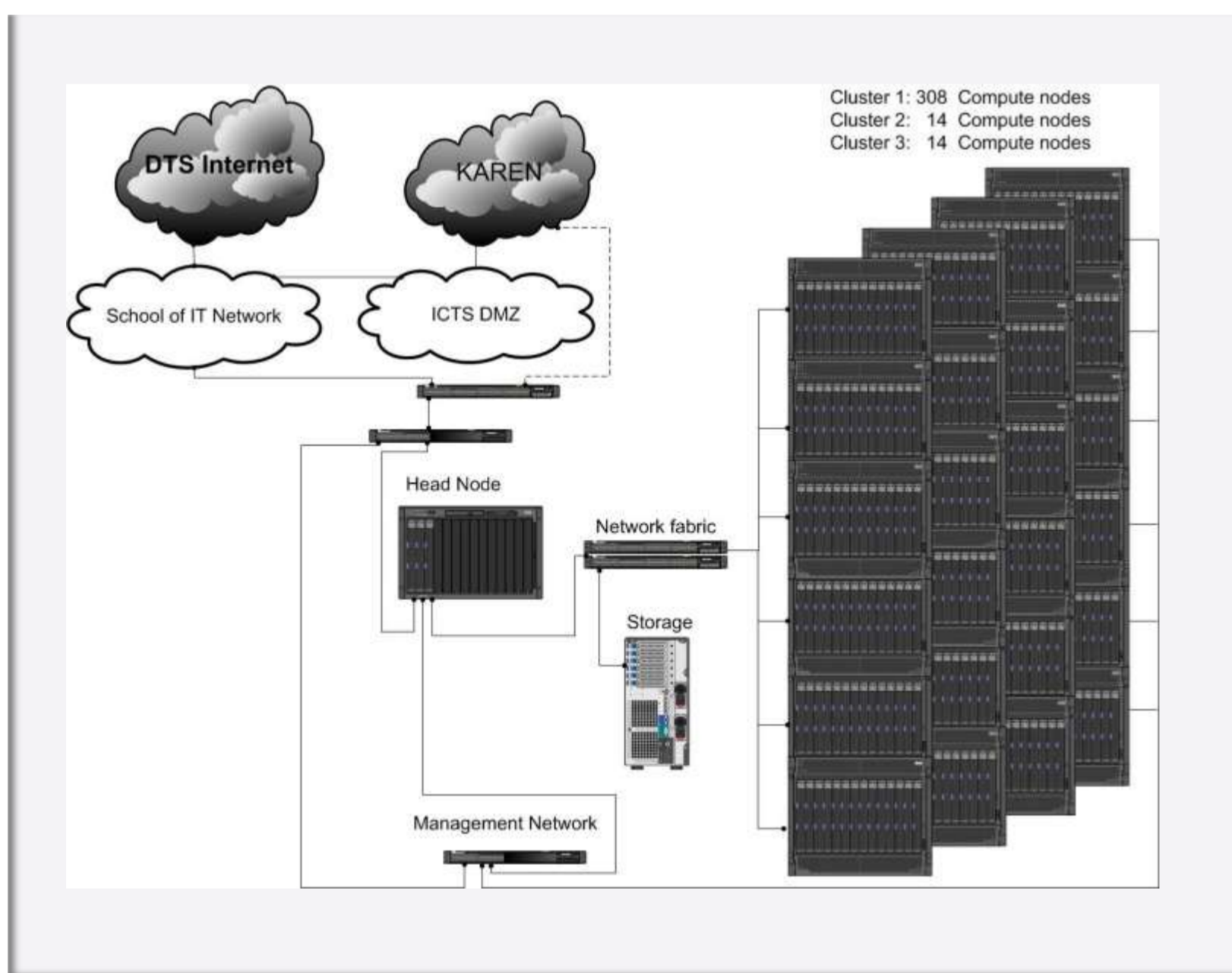


336+ IBM HS21 Blade Servers, Cabinets and Chassis > 4 tons

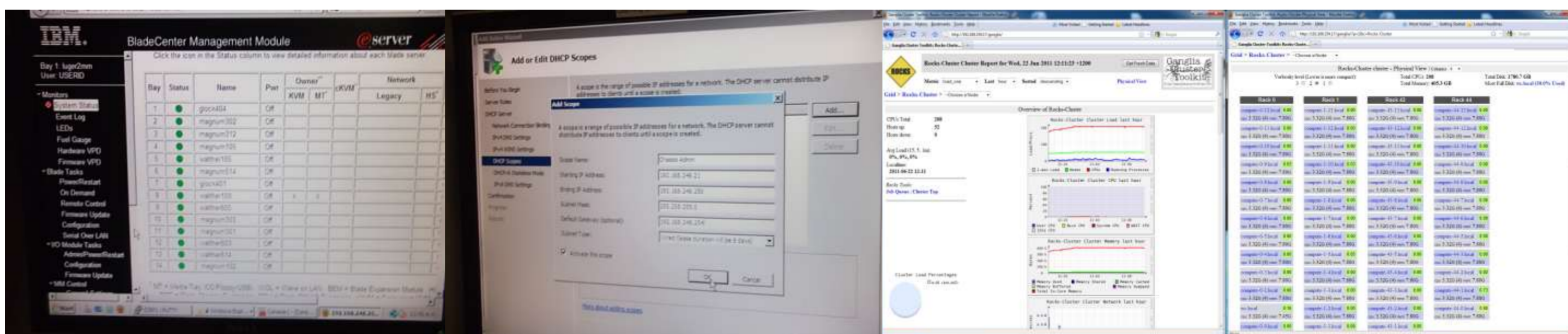
Portacom plant from decommissioned data centre
Power required > 100kw



Assemble Cable
Power up Wipe HDD
Flash Bios
Network



Applications	Rocks Rolls installed Blender, R, Zen, MatLab
System Environment	Rocks Cluster Management Centos operating system; MYSQL node database; DHCP for cluster nodes; Sun Grid Engine (SGE) workload manager; Ganglia monitoring, QMON graphic interface; Area 51, (Tripwire and chkrootkit) software and data security; HPC (OpenMPI, MPICH2, PVM) enable parallel processing across cluster Compilers C, C++ and Fortran
Hardware	336 64-bit blades, (311 currently installed): 3.4GHz Xeon (two per blade) with hyperthreading 8GB RAM; 36GB HDD 44 x 32 bit blades (28 currently installed), with 2.8GHz Xeon (two per blade) CPU 6GB RAM; 36GB HDD IBM Blade Management Modules; Nortel and IBM Switch Modules; Juniper EX series switches 2x 48 port virtual chassis Cluster Juniper EX series switches 2 x 24 port 10 Gigabit fibre trunk



1200 CPU's running as a rocks cluster

Next ?
Benchmark, Add gateway to BestGrid
Make available to users with Academic and Research requirements